

GrandRib 3[®] Plus ENDURACOTE

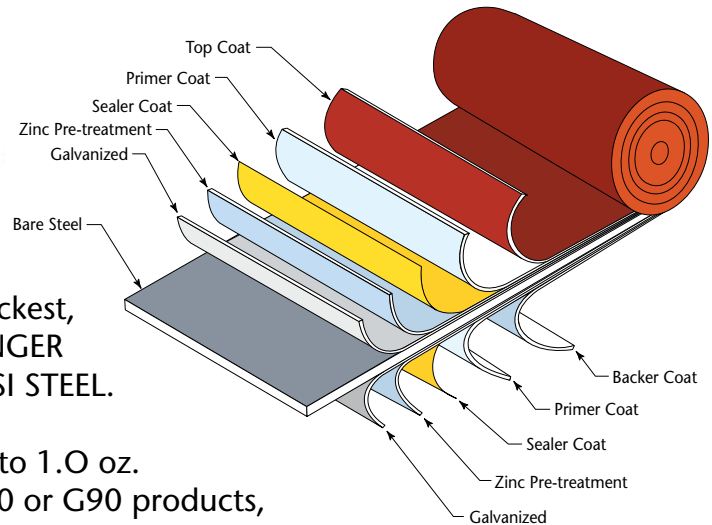
PREMIUM DEFENSE
Against the Elements



Grandrib 3[®] PLUS is "THE ORIGINAL" – Fabral designed the original 9" on center ribbed panel. Most others have copied but no one has matched its strength, durability or attractive design.



10 LAYERS OF PROTECTION



Bare Steel: Fabral uses only 29 gauge, 80,000 minimum PSI bare steel with a minimum .015 thickness before paint to assure you of the thickest, strongest panel in the industry. UP TO 50% STRONGER THAN SOME COMPETITORS 26 GAUGE, 40,000 PSI STEEL.

Galvanization (2 layers): Grandrib 3[®] Plus has up to 1.0 oz. of zinc protection as compared to competitors' G60 or G90 products, resulting in up to 67% more corrosion protection.

Zinc Pre-Treatment (2 layers): Prepares the surface for paint while adding additional corrosion resistance. Many other panels skip this step.

Sealer Coat (2 layers): Seals the Zinc Pre-treatment and smooths the surface to receive the paint.

Thick Primer Coat (2 layers): Prepares the surface for consistent color application while adding even more corrosion protection.

Backer Coat: Full coat backer in off-white for consistency inside the building.

Top Coat: Enduracote™, the industry leading exterior paint for color retention and durability.

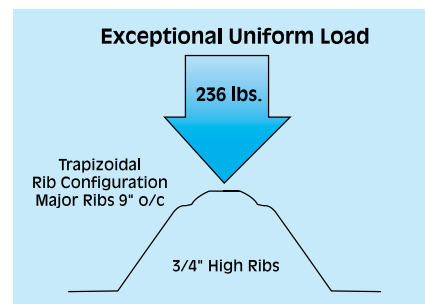
GrandRib 3[®] Plus Warranty

- Lifetime film integrity warranty for walls and roofs
- 35 year warranty against fade and chalk for walls and roofs
- 15 year edge rust warranty against acid rain
- 30 year non-perforation warranty against acid rain for walls; 25 year for roofs

Exceptional Uniform Load

More bends = greater strength

Trapezoidal Rib Configuration Major Ribs 9" o/c



Compare the load of 236 lbs. per square (236 PSF) on 24" centers against... any steel panel in the Industry today!

Fabral's Enduracote™

ENDURACOTE™

PREMIUM DEFENSE
Against the Elements

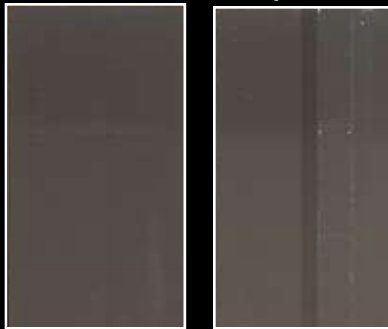
Uses only ceramic and select inorganic pigments...
It does make a difference.

Use of the correct pigments is critical in formulating a finish that resists fading. Ceramic and select inorganic pigments have been used for centuries in porcelain and ceramic products. This fade performance is remarkable. Enduracote™ uses a combination of these pigments to offer exceptional chalk and fade resistance characteristics while other paint systems use lower quality organic pigments which chalk and fade faster.

Below are photos of competitor's coating systems currently being represented as "equals" to Enduracote™

45° South Florida Testing after only 34 Months Exposure
Comparison of Enduracote™ left panel in each color & current standard paint systems of competition on right.

Enduracote™ Competitor #1



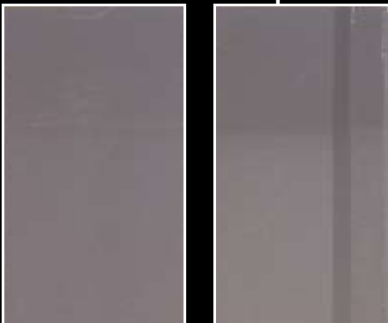
Enduracote™ Competitor #2



All painted Grandrib 3® Plus comes with the exclusive Enduracote™ coating system.

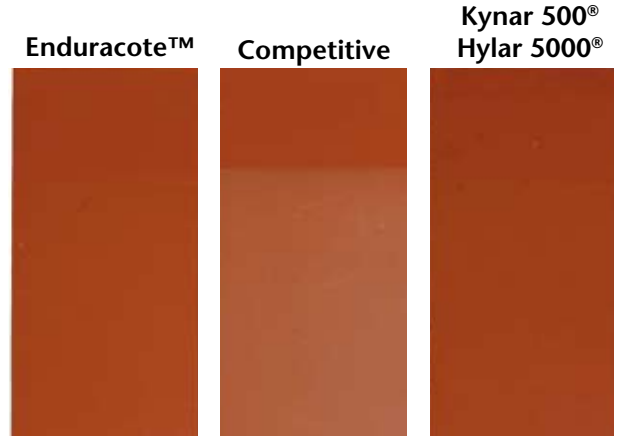
Grandrib 3® Plus is backed by an industry leading Lifetime Paint warranty.*

Enduracote™ Competitor #3



Kynar 500® is a registered trademark of Elf Atofina.
Hylar 5000® is a registered trademark of Ausimont USA.

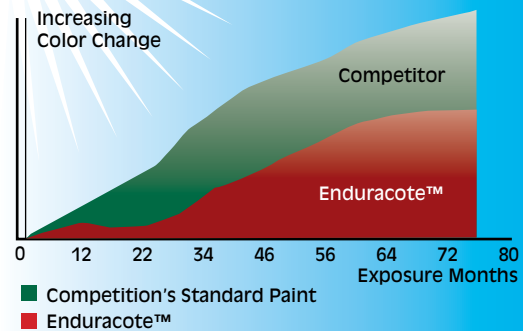
Enduracote™ versus Kynar 500® or Hylar 5000®



Enduracote™ has similar chalk and fade characteristics to Kynar 500® or Hylar 5000® plus it is more scratch resistant than Kynar 500® or Hylar 5000® offering you years of superior durability.

If you want your building to stand out from the crowd, choose Enduracote™. It out performs the competition.

Color Loss Comparison Chart



Facilities Nationwide
Corporate Office
3449 Hempland Rd.
Lancaster, PA 17601
(800) 477-2741
www.fabral.com

Valspar F-500
98-32-478
3/06 10k VPC

*See dealer for details.